

E-SAVE

by
vetter

E-Vehicle Isolation System



A Trusted IDEX
Fire & Safety Brand

vetter



The innovative Vetter E-Vehicle Isolation System (EIS) ensures a safe cooling, transportation and storage of extinguished electric and hybrid vehicles.

Extinguished electric vehicles require a different handling than non-electric vehicles.

It is critical to cool the lithium-ion battery to avoid a re-igniting. The safe transport and storage of an extinguished electric vehicle are further challenges.

The E-Vehicle Isolation System (EIS) gives clear answers to this:

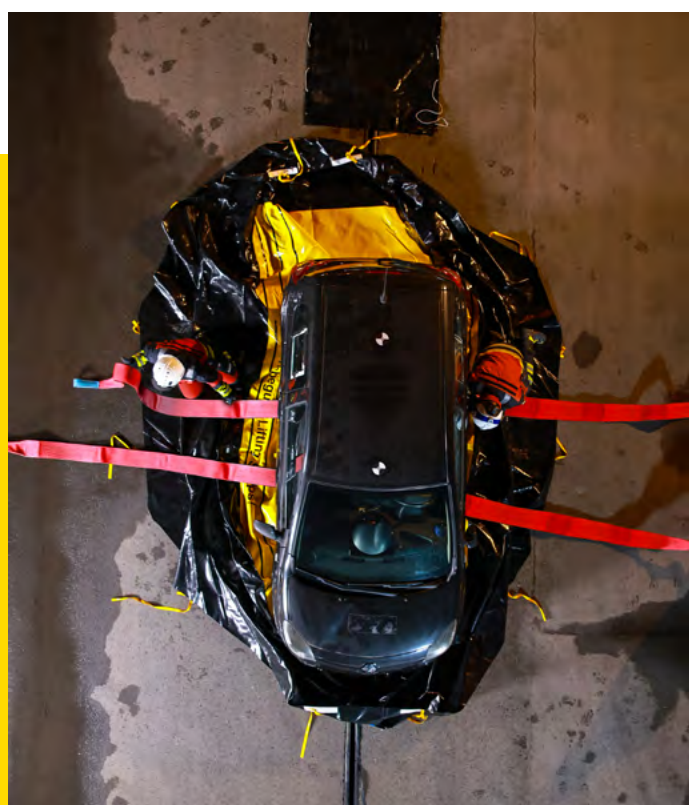
- Safe handling of electric vehicles in which a fire has been extinguished
- Cooling, transportation and storage of electric vehicles after a fire has been extinguished
- Safe cooling of the lithium ion battery
- Quick and easy to set up
- Flexibility and mobility thanks to the compact design
- Minimal extinguishing water requirements
- Can be reused multiple times
- Extremely durable and tear-resistant
- Fluoric acid (LiPF₆) resistant
- Universal fit for all standard car dimensions
- Water level gauge for checking the filling level in the EIS
- CE-certified

After extinguishing a fire in an electric or hybrid vehicle, the vehicle can be cooled, transported and safely stored with the EIS.

BUT HOW EXACTLY DOES THIS WORK?

Preparinig the EIS

Due to its intelligent design, the EIS is easy to transport and can be brought to the place of use without any problems. Handy carrying handles on the EIS packing unit and a trolley for the accessories help with this.



Packing up the vehicle

After extinguishing the fire, the electric vehicle is lifted up with lift pads, supporting materials or a crane, and then the EIS is positioned under the vehicle. The electric vehicle is lowered and the lifting straps, which will be required for lifting it later, are fitted.

Various lashing straps are now used to attach the EIS to the vehicle. The straps ensure that the tarpaulin is fitted securely and is adjusted to the contours of the vehicle. This reduces the water consumption to a minimum.

Flooding & cooling the battery

The water supply is connected to the upper hose connection and the water level gauge to the lower connection. Then the EIS is flooded until the vehicle's battery unit is under water. The water level gauge provides information about the water level in the EIS. After the car has been filled sufficiently, the water supply is turned off.



Lifting

The lifting straps are now attached to the towing service's crane.

The towing company lifts the entire EIS safely and finally loads it on the truck bed.



Transporting & storing the vehicle

After reaching the storage site, the electric vehicle, wrapped up in the EIS system, can be stored in the open air or in a hall with an appropriate ventilation system.

The EIS filled with water should be stored for at least 72 hours to prevent the lithium ion batteries from self-igniting. With the help of the intelligent water level gauge, it is possible to check the current water level at any time and top up the water if necessary.

Storing & reusing the EIS

The EIS can be used multiple times. After it has been checked and cleaned, it can simply be folded up and stowed away in the emergency vehicle. When the fire brigade or towing services are once more called out to a fire, the E-Vehicle Isolation System is ready for use again.

Technical data*

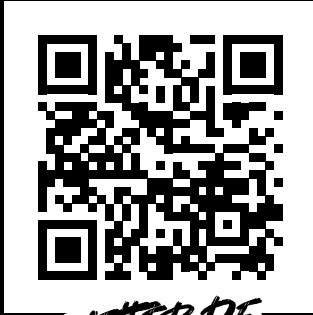
E-Vehicle Isolation System (EIS)			
Art. No.			1110021800
Dimensions (L x W x H)	cm		500 x 250(160) x 120(165)
Permissible load capacity	t		8.5
Permissible car weight	t		3.5
Minimum vehicle length	cm		269.5
Maximum vehicle length	cm		500
Weight of the EIS without accessories	kg		46
Weight of the accessories trolley	kg		37
Material tarpaulin			Polyester fabric coated with PVC on both sides (in accordance with DIN EN 12641-2)
Temperature resistance	°C		70
Lifting and lashing belts			Acc. ISO1492-1
Water connection			Storz coupling size C
Maximum water pressure	bar		5
Maximum volume	L		5000
Nominal volume of hybrid vehicles	L		2500
Nominal volume of electric vehicles	L		2500

*Subject to technical changes in the course of product improvement

EIS includes



- EIS bag incl. easy to use packaging
- Repair-set
- EIS accessory set
 - storage trolley
 - automatic tension straps (9x)
 - tension straps (4x)
 - water level indicator (1x)



VETTER.DE

Vetter GmbH

Blatzheimer Str. 10–12
53909 Zülpich
Germany

Sales

Phone: +49 (0) 22 52 / 30 08-0

Fax: +49 (0) 22 52 / 30 08-590

Mail: vetter.info@idexcorp.com

vetter.de

© Copyright | 01-2024 | Vetter GmbH | Changes and errors excepted.

IDEX
FIRE & SAFETY