

Medical tents

Product catalogue



Contents

Medical tents

MT line	Page 4
---------	--------

Accessories

Inflation and deflation	Page 7
Windows, lettering	Page 8
Additional feedthroughs, partition walls and lighting	Page 9
Tent heating	Page 10
Other equipment	Page 11



Well thought-out tent construction



Removable floor



Can be combined individually



4 – 6 windows depending on MT tent size (PREMIUM)



Individual lettering possible



Securing net in the roof area (PREMIUM)



Barrier-free floor



Removable front tent part



Easy docking via velcro/fleece

MT line

Versatile. Flexible. Well thought-out.

The MT line from Vetter provides convincing versatility, top quality and many well thought-out features that make your work easier. Thanks to its usable width of 5.5 m, there is still a passage of 1.50 m for medical staff and devices when the beds are placed crosswise.

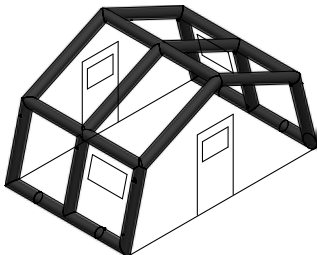
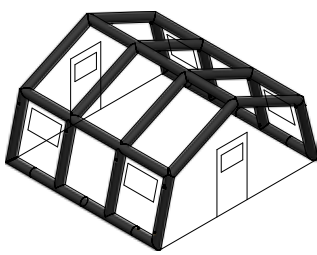
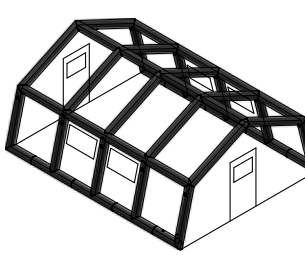
Four sizes and a docking tent

You can choose between four different tent lengths with useful areas between 20 m² and 60 m². We also offer a docking tent with which you can set up a tent city or connect individual tents with each other.

Save staff and time

The tents are designed in such a way that from transport to erection and dismantling of the tent, the deployment can be carried out in the most personnel- and time-saving manner possible. This means: Self-erecting support frame, low weight, compact pack size and easy handling.

Technical data*

Product	MT 20	MT 30	MT 40
			
Art. no. PREMIUM set with PU tent tarpaulin	1523033000	1523033100	1523033200
Art. no. BASIC set with PU tent tarpaulin	1523034700	1523034800	1523035000
Useful area <i>m²/sq.ft.</i>	20 216	30 324	40 432
Number of possible beds	6	8	12
Set-up time, approx. <i>sec.</i>	120	180	240
Exterior size (L x W x H) <i>cm/ft</i>	370 x 588 x 330 12 x 19 x 11	550 x 588 x 330 18 x 19 x 11	730 x 588 x 330 24 x 19 x 11
Interior size (L x W x H) <i>cm/ft</i>	370 x 534 x 303 12 x 18 x 10	550 x 534 x 303 18 x 18 x 10	730 x 534 x 303 24 x 18 x 10
Air requirement <i>l/cu.ft.</i>	3,052 108	4,566 161	5,851 207
Pack size (with pack bag)*** <i>cm/inch</i>	110 x 85 x 60 43 x 33 x 24	110 x 85 x 60 43 x 33 x 24	110 x 85 x 85 43 x 33 x 33
Weight PREMIUM, approx. <i>kg/lbs</i>	76 168	110 243	160 353
Weight BASIC, approx. <i>kg/lbs</i>	74.5 164	107.5 237	156.5 345

*Subject to technical changes | **Height of roof ridge = 390 cm | ***Smaller pack size (with pack tarpaulin) on request, e.g. for vehicle loads

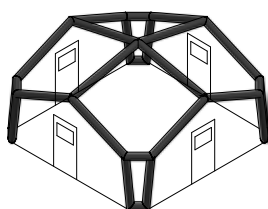
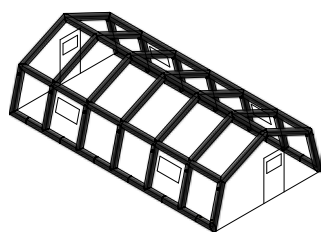
Equipment PREMIUM set in detail:

- › Tent frame including tensioning ropes
- › Throw-over tarpaulin with separately removable entrance
- › Two tarpaulins independent connection options
- › Patented securing net in the roof area (removable)
- › Sufficient number of windows
- › Removable tent floor (barrier-free)
- › Four feedthrough openings, two on each side of the tent

Equipment BASIC set in detail:

- › Tent frame including tensioning ropes
- › Throw-over tarpaulin with separately removable entrance
- › Tarpaulins two independent connection options
- › Removable tent floor (barrier-free)
- › Two feedthroughs, one on each side of the tent (diagonal)

MT 60	Docking tent
--------------	---------------------



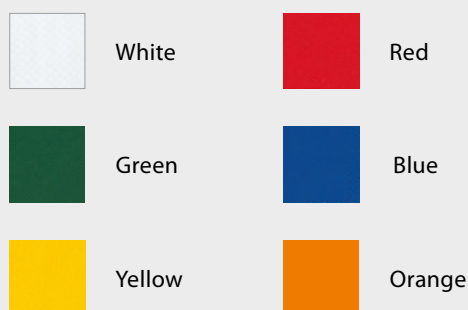
1523033300	1523027800
1523033700	-
60	45
648	462
18	-
360	300
1,100 x 588 x 330 36 x 19 x 11	660 x 660 x 330** 21,5 x 21,5 x 11
1,100 x 534 x 303 36 x 18 x 10	660 x 660 x 303 21,5 x 21,5 x 10
8,113 287	4,567 161
110 x 95 x 100 43 x 37 x 39	110 x 85 x 85 43 x 33 x 33
210 463	135 298
205 452	-

Scope of delivery Universal tents:

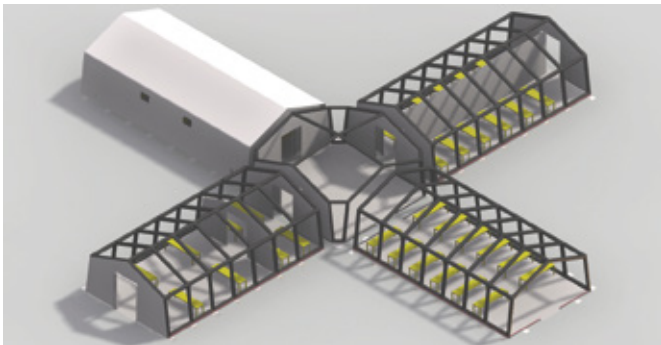
- › Inflatable tent frame incl. tensioning ropes
- › Removable tent tarpaulin with separate entrance tarpaulins (can be partially or completely rolled up)
- › Removable tent floor
- › Fastening loops inside the tent, such as for lamps
- › One door on each end face
- › Sufficient number of windows (PREMIUM)

Each tent comes with a bag including accessories (hammer, pegs and repair material). All the equipment is supplied in a portable packing unit.

The Vetter standard colours



**Would you like a different colour?
No problem! We are happy to manufacture all colours individually for you.
Just give us a call: +49 (0) 22 52 / 30 08-0**



Also suitable as mobile hospitals:

Example scenario
(Number of patients: 120)

Equipment	required number
Tent type MT 60 (60 m ²)	10 (600 m ² useable areas)
No. of docking tents	3
No. of beds	120
Lamps per MT 60	4
Heaters per MT 60	1



In operation for ...

- › First aid tent for large events
- › Emergency control centre for aid organisations
- › Food tent for large-scale operations
- › Storage tent
- › Visual protection during treatment of injured persons
- › Major incidents with mass casualties
- › Earthquakes
- › Storm and flood
- › Forest fires
- › Terrorism (NBC protection measures)
- › Threat of war
- › Decontamination during epidemics (pre-hospital, in conjunction with decon tents)
- › Mass accidents



Good reasons:

- › The most comprehensive basic equipment on the market
- › Specially developed for medical supplies
- › Erected in two minutes (MT 20)
- › Ready for use for several days without reinflation
- › Easy docking of the tents
- › Patented securing net in the roof area for free attachment of lighting and medical devices
- › Individual lettering either on separate tarpaulin or as direct printing on the tent tarpaulin
- › Quick assembly and immediate usability of the surfaces
- › Large, usable width for sufficient free space in the tent
- › Infinite combination options
- › Removable entrance tarpaulins ensure more flexibility



Guaranteed quality:

- › Acceptance test of all tents and accessory products testing
- › With 1.3 times the operating pressure
- › Safety valve (0.3 bar) integrated in the support frame protects against over-inflation
- › A support frame is made of tear-resistant material
- › Extremely high-quality tarpaulin material, especially for tents
- › Tarpaulin material flame-retardant according to DIN 4102 B1

Accessories

Variation possibilities for the equipment

Inflation with cylinder

Compressed air cylinder

- › 6 l/300 bar (0.21 cu.ft./4,350 psi), steel, 5/8" IT, 1,800 l (63.5 cu.ft.)

▶ **1600010800**



Dual connector

- › For dual connection of 2 compressed air cylinders
- › Thread 5/8"

▶ **300 bar (4,350 psi): 1600009100**



Pressure regulator

- › 200/300 bar (2,900/4,350 psi)
- › Outlet pressure, max: 14 bar (203 psi)

▶ **1600031900 | 1600032000 (USA)**



Emptying

Vacuum adapter

▶ **1600016301**



Inflation with blower

Tent blower 0.14 - 0.4 bar (2.03-5.8 psi)

- › Electric
- › IP 68 plug
- › Volume flow, max: 1,800 l/min. (63.5 cu.ft.)
- › Volume flow with booster, max.: 2,500 l/min. (88.29 cu.ft.)
- › Power, max: 1,000 W
- › Power with booster, max: 2,000 W
- › Mains voltage: 230 V, 50 Hz
- › Dimensions (L x W x H): 32 x 17 x 26 cm (12.6 x 6.7 x 10.2 inch)
- › Weight, approx: 4.1 kg (9.04 lbs)
- › 10 m (393.7 inch) cable



▶ **1523017700**

Inflation hose 1.5 m (59 inch)

- › For tent blowers 0.14 - 0.4 bar (2.03-5.8 psi)

▶ **1523021100**



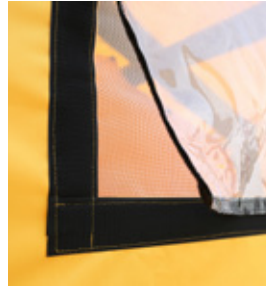
Windows



Tent window

- › With fly gauze and cover

▶ **1520020600**



Wind protection foil for window

- › Including installation

▶ **1520033900**



Tent window

- › With fly gauze, windbreak and cover

▶ **1520025700**

Lettering



Lettering on banner

- › Size: 1,300 x 600 mm (51.2 x 23.6 inch)
- › Single-colour lettering, multi-colour on request
- › Attached by Velcro/Fleece to the tent tarpaulin

▶ **1520025600**



Lettering on tent tarpaulin

- › On one outer side
- › Single-colour lettering, multi-colour on request

▶ **1520022400**

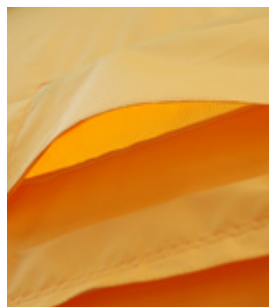
Additional feedthroughs



Duct openings for cables or heating

- › With velcro/fleece closure

▶ **1520020500**



Vent flap

- › Mounted in the gable
- › For better air circulation

▶ **1520025800**

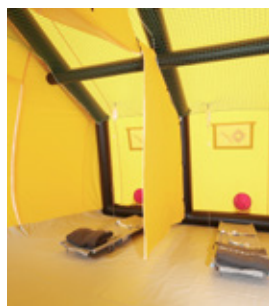
Partition walls



Separation wall, transverse

- › For all MT tent sizes with integrated door

▶ **1523014100**



Partition wall, half transverse

- › Crosswise for all MT tent sizes

▶ **1523024900**



Longitudinal separation wall, PU

- ▶ **MT 20: 1523014300**
- ▶ **MT 30: 1523014400**
- ▶ **MT 40: 1523014200**
- ▶ **MT 60: 1523014500**

Lighting

Daylight lamp, 2 x 36 W

- › With plug and socket, IP 54

▶ **1520038600**



LED lamp, 36 W

- › With plug and socket, IP 68

▶ **1700061300**



Heaters

Warm air heater K30T*

- › Oil heater
- › IP 68 plug
- › Heating capacity: 29 kW Nominal
- › Heat load, max: 32 kW
- › Air capacity: 2,050 m³/h
- › Supply voltage: 230 V, 50 Hz
- › Fuel: Heating oil EL/Diesel
- › Fuel consumption, max: 2.5 kg/h
- › Tank capacity: 35 l (1.2 cu.ft.)
- › Exhaust gas connection Ø:
2 x 205 mm (0.08 x 8.07 inch)
- › Dimensions (L x W x H):
145 x 68 x 82 cm
(57.1 x 26.8 x 32.3 inch)
- › Weight, approx.: 85 kg (187.39 lbs)



1523034600

Duotherm GHE 15 M combi heater

- › Gas/electric heater
- › Electrical connection:
earthed plug
- › Heating capacity gas operation:
7 – 14 kW
- › Heating capacity electric
operation: 3 kW
- › Air capacity gas operation:
20 m³/h
- › Air capacity electric operation:
520 m³/h
- › Supply voltage: 230 V, 50 Hz
- › Dimensions (L x W x H):
510 x 215 x 335 mm (20.1 x 8.5 x 13.2 inch)
- › Weight, approx.: 10 kg (22 lbs)



1523034600

*We recommend ordering the accessories at the same time in order to provide the complete functioning of the tent heating.

Other equipment



Insulation tarpaulin

- › Attached to the framework by Velcro/Fleece
- › Protection against external temperatures

▶ **MT 20: 1523032400**

▶ **MT 30: 1523032500**

▶ **MT 40: 1523032600**

▶ **MT 60: 1523032700**

▶ **Docking: 1523032800**



Ballast tank

- › For better protection in strong winds
- › 2 ballast tanks per tent are required
- › Different sizes available on request

▶ **MT 20: 1523018400**

▶ **MT 30: 1523018500**

▶ **MT 40: 1523018600**

▶ **MT 60: 1523018700**



Part of the international IDEX Corporation

Vetter is part of the international IDEX Corporation. This corporation invests in successful medium-sized companies in highly specialised markets. All members of the group are characterised by their technical orientation and high innovative strength.

As our customer, you benefit twice over: On the one hand, from our international application knowledge and, on the other hand, from the intensive know-how transfer within the group of companies. Because this know-how flows directly into the development of Vetter's thought-out and high-performance products.



idexcorp.com





The full-range supplier for emergency pneumatics

Vetter represents sound technological expertise as well as intensive cooperation with fire brigades all over the world. On this basis, we develop high-quality and field-proven pneumatic products that are indispensable in many rescue areas and application scenarios.

Rescue Products

Hazardous materials program

Pneumatic tents and showers

Oil and water aspirators

Airshore

Aircraft Recovery

Truck recovery

Industrial pneumatics

Inspection, sealing and rehabilitation technology

All products, detailed information and catalogues for download can be found on the Internet at: **vetter.de**

Place your trust in emergency pneumatics!

We are the company who can help you, find a solution to your problems.

Vetter GmbH

A Unit of IDEX Corporation

Blatzheimer Str. 10–12
53909 Zülpich
Germany

Sales

Tel: +49 (0) 22 52 / 3008-0
Fax: +49 (0) 22 52 / 3008-590
Mail: vetter.info@idexcorp.com

vetter.de

© Copyright | 01.2024 | Vetter GmbH | Subject to alterations and errors.